

INTERACTIVE KIOSK FOR COLLEGE OF ENGINEERING

Team Phoenix:

Adonay Berhe, Richard Boss,
Kevin Benzing



THE PROBLEM

Engineering buildings lack a centralized
information hub!



THE PROBLEM



Who has an office?

What classrooms can be found?

Where are these offices and classrooms?

What events related to the COE are happening?



INTERACTIVE TOUCHSCREEN KIOSK

“The Portal to All of Engineering”
- Rob Patton



Interactive Kiosk for
College of Engineering

University of Idaho
College of Engineering

WHAT INFORMATION DO WE WANT?

Historical
Background

Staff
Directory

Interactive
Map

Focus Areas:
ThinkTank,
CSAC, etc.

Promotional
Videos for the
College

Upcoming
events

Engineering
Club Activities





Featured Videos



March 2nd,
2017

12:50pm

Next Event

NSBE Lecture
March 2nd

Weather



29°F

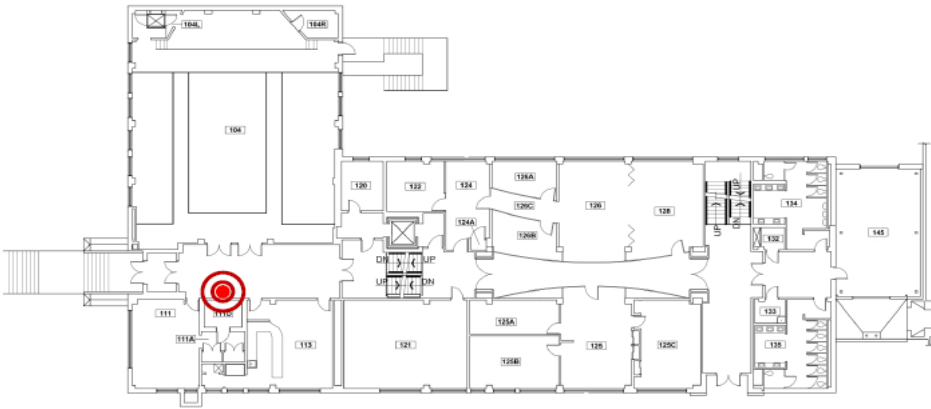




Directory

Alves-Foss, Jim	225
Bolden, Bruce	232
Conte de Leon, Daniel	233
Donohoe, Gregory	324
Foster, James A.	441E
Heckendorn, Robert	226
Jamil, Hasan	236
Jeffery, Clint	230
Krings, Axel	320
Ma, Marshall (C)	337
Rinker, Robert	335

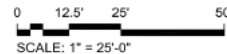
Tap an entry in the Directory to see directions.



JANSSEN ENGINEERING BUILDING - #028

FIRST FLOOR

01/29/2016



SCALE: 1" = 25'-0"



PRODUCT SUPPLIER

- Offer complete finish solutions for digital signage
 - ❑ Content Manager – Development
 - ❑ Content Player – Display
- System solutions – Touchscreen monitors, computers
- Database to manage signs
- Remote deployment and updating

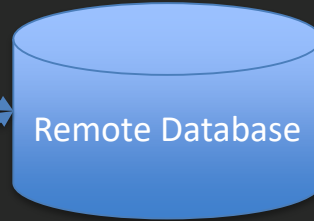


DESIGN PROCESS

Content Manager



⋮



Content Player



⋮



CONTENT MANAGER

The screenshot shows the 'Content Manager' application. The top menu bar includes File, Network, Content, Template, App, User, Group, View, Tools, and Help. The left sidebar contains icons for various content types: Image, Live Data, Text, Wayfinding, Bing Maps, Video, PDF, PowerPoint, Control Pad, Content Feed, Feed, Date/Time, Weather, Flash, HTML, and Live TV. The central tree view shows the 'Engineering Phoenix' structure, including 'Linux Lab', 'Player', 'Kiosk', and 'Landing'. The 'Landing' section is expanded, showing a hierarchy of content items like 'Background', 'Background - Alpha', 'JEB', 'Top Right', 'Weather', 'Top Right - 1', 'Welcome', 'Welcome Video - Back', 'Help Message', 'Help Button', 'Top bar', 'Mute Button', 'Mute Button Image', 'Pause Button', 'Weather', 'Home', 'Map 2', 'Events', 'History 2', 'Deans' List 2', 'Background', 'UI entrance - No Duration', 'Background - Alpha', and 'JEB'. The main preview window displays a video of the 'Janssen Engineering Building (JEB)' with a timestamp of 8:21 PM, April 27, 2017, and a temperature of 51/35 °F. The bottom table lists 108 content items with columns for Name, Status, Advertiser, Campaign, Description, Media Type, Recurrence, Duration, Location, Creation Date, and Deployer.

Name	Status	Advertiser	Campaign	Description	Media Type	Recurrence	Duration	Location	Creation Date	Deployer
Nothing	New				Text	All day every day effective 4/17/2017	00:00:00		4/17/2017...	
pause icon	New				Image	All day every day effective 4/27/2017	00:00:00	https://services.fvcloud.com/FW/Services/download?filePath=pausing	4/27/2017...	Copy to
play	New				Image	All day every day effective 4/27/2017	00:00:00	https://services.fvcloud.com/FW/Services/download?filePath=playing	4/27/2017...	Copy to
Student Life Video	New				HTML			https://www.youtube.com/embed/4ny8FAPhNo7controls=0&loop=1&allowfullscreen=0&autoplay=1&autohide=1&showinfo=0&mode=transparent&modestbranding=1&rel=0	4/17/2017...	Play from
volume-muted	New				Image	All day every day effective 4/17/2017	00:00:00	https://services.fvcloud.com/FW/Services/download?filePath=volume-muted.png	4/17/2017...	Copy to
volume-on	New				Image	All day every day effective 4/17/2017	00:00:00	https://services.fvcloud.com/FW/Services/download?filePath=volume-on.png	4/17/2017...	Copy to
Weather	New				Weather	All day every day effective 3/28/2017	00:00:00	https://services.fvcloud.com/FW/Services/download?filePath=volume-on.png	4/17/2017...	Copy to
Map (3 items)	New					All day every day effective 4/27/2017			4/27/2017...	
Landing Text	New				Text	All day every day effective 4/27/2017	00:00:00		4/27/2017...	
Time	New				Date/Time	All day every day effective 3/28/2017	00:00:00		4/27/2017...	
Flash Weather	New				Weather	All day every day effective 11/17/2017	00:00:00		4/27/2017...	



Interactive Kiosk for
College of Engineering

University of Idaho
College of Engineering

FROM THIS...

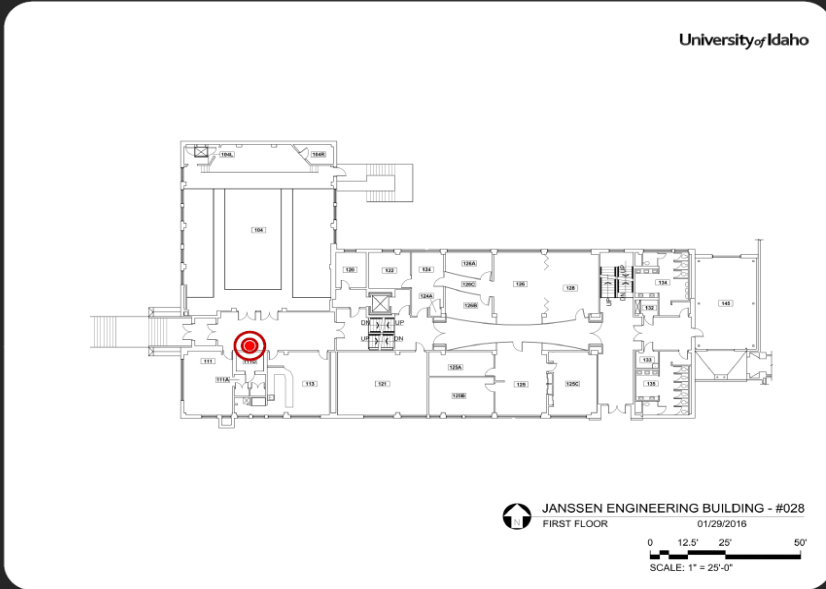
Janssen Engineering
Building (JEB)

Home

Map

Events

History



Directory

Alves-Foss, Jim	225
Bolden, Bruce	232
Conte de Leon, Daniel	233
Donohoe, Gregory	324
Foster, James A.	441E
Heckendorn, Robert	226
Jamil, Hasan	236
Jeffery, Clint	230
Krings, Axel	320
Ma, Marshall	337
Rinker, Robert	335

Tap an entry in
the Directory to
see directions.



Interactive Kiosk for
College of Engineering

University of Idaho
College of Engineering

... TO THIS

Janssen Engineering Building (JEB)

[Home](#)[Map](#)[Events](#)[History](#)

8:39 PM
April 27
2017



University of Idaho

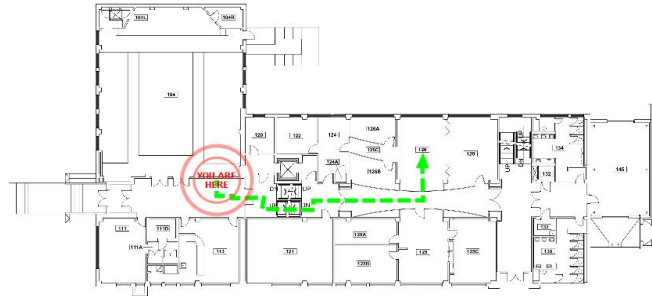


Offices

Rooms

Auditorium JEB 104
CS Office JEB 236
CSAC JEB 211D
Dean's Office JEB 125
Engineering Outreach JEB 37
Linux Lab JEB 211A
ThinkTank JEB 126

Office JEB 1
Classroom JEB 6
UNIVRSE Lab JEB 13
Classroom JEB 21
Classroom JEB 25
Classroom JEB 26
Classroom JEB 121
Meeting Room JEB 126A
Meeting Room JEB 126B
Classroom JEB 211
Meeting Room JEB 326
Lab JEB 321
Classroom JEB 328
Lab JEB 331



JANSSEN ENGINEERING BUILDING - #028
FIRST FLOOR
01/29/2016

0 12.5' 25' 50'
SCALE: 1" = 25'-0"

?



Interactive Kiosk for
College of Engineering

University of Idaho
College of Engineering

SPECIFICATIONS

General Requirement	Specific Requirement	Implementation
Map of building	Have a directory offices, rooms, etc. of the building and show a route to the location on a map.	Use Wayfinding with directory
About the building	Have information about the history of the building and what its purpose is.	Have a section where users can read up on the history of the building and about what it offers
Useful information	Populate the kiosk with useful and relevant information for a range of audiences.	Discern what information various groups would find useful, then acquire and display it
Security	Ensure that the kiosk cannot be tampered with in a way that would compromise it or other machines.	Hide the computer out of reach and have the kiosk on its own subnet
Maintainability	In the interest of future parties, design it in such a way that others will be able to learn to maintain it.	Polish final product to near perfection, provide as much documentation as possible



CONSTRAINTS

- Utilize Four Winds Interactive
- Be concise – provide diverse content/information without overwhelming the user
- Time



DELIVERABLES

- Initial implementation of a user friendly, information rich digital sign
 - Focus on: landing page, maps, events, and history
 - Explore as many designs as possible
- Documentation to supplement the knowledge base supplied by FWI



Janssen Engineering Building (JEB)

8:34 PM
April 27
2017

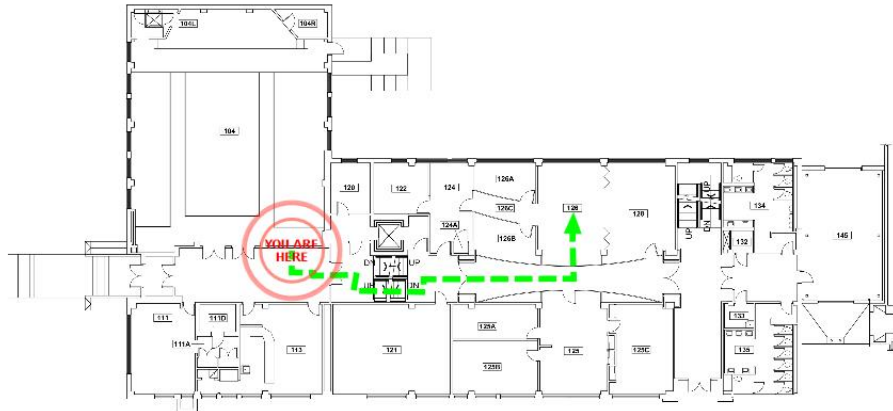


?





University of Idaho



JANSSEN ENGINEERING BUILDING - #028

FIRST FLOOR

01/29/2016

0 12.5' 25' 50'
SCALE: 1" = 25'-0"



Offices

Rooms

Auditorium	JEB 104
CS Office	JEB 236
CSAC	JEB 211D
Dean's Office	JEB 125
Engineering Outreach	JEB 37
Linux Lab	JEB 211A
ThinkTank	JEB 126
-----	-----
Office	JEB 1
Classroom	JEB 6
UNIVRSE Lab	JEB 13
Classroom	JEB 21
Classroom	JEB 25
Classroom	JEB 26
Classroom	JEB 121
Meeting Room	JEB 126A
Meeting Room	JEB 126B
Classroom	JEB 211
Meeting Room	JEB 326
Lab	JEB 321
Classroom	JEB 328
Lab	JEB 331



INTERACTIVE KIOSK FOR COLLEGE OF ENGINEERING

COME DEMO IT AT BOOTH 15

Yes, you can touch it!

Team Phoenix:

Adonay Berhe, Richard Boss,
Kevin Benzing



Interactive Kiosk for
College of Engineering

University of Idaho
College of Engineering